

Special Feature:**A child with chronic glomerulonephritis with Beau's lines**

G. Sindhu,¹ A. Sunnesh,² N. Sai Sameera,² V. Sarat Chandra,² N. Praveen,² B. Sangeetha Lakshmi,² Ram,² V. Siva Kumar²

Departments of¹Medicine, ²Nephrology, Sri Venkateswara Institute of Medical Sciences, Tirupati

Sindu G, Sunnesh A, Sai Sameera N, Sarat Chandra V, Praveen N, Sangeetha Lakshmi B, Ram, Siva Kumar V. A child with chronic glomerulonephritis with beau's lines. J Clin Sci Res 2017;6:253. DOI: <http://dx.doi.org/10.15380/2277-5706.JCSR.17.06.002>.

A 7- year-old child with relapsing nephrotic syndrome, presented with chronic kidney disease stage-V needing dialysis. He was supported during hospital stay with peritoneal dialysis and succumbed to death due to the severity of the illness. The point of interest in this is to highlight the importance of nail changes as a tell-tale event and a clue towards kidney disease. On examination he had deep grooved horizontal lines on toe nails (Figure1).

Inspection of nails many a times makes us aware of a possible underlying systemic condition. One such nail condition is Beau's lines. Beau's lines are horizontal grooves on the nail plate running across the nail. They are actual ridges that cause indentation of the nail plate and migrate distally as the nail grows. These lines were named after their discoverer a French physician, Joseph Honore Simon Beau.¹ They develop as a result of a momentary arrest or hindrance of the nail matrix growth during a severe systemic illness. The depth of the depression signifies the degree of the damage, and the width indicates the length of the insult.¹ There are no preventive measures or treatments, and the changes usually resolve as the nails grow out.^{2,3} This stands as an example of how nail, considered as a dead element teaches the living by revealing the events of his chronic renal illness.

Received: June 15, 2017, Accepted: September 05, 2017.

Corresponding author: Dr V Siva Kumar, Professor, Department of Nephrology, Sri Venkateswara Institute of Medical Sciences, Tirupati, India.

e-mail: sa_vskumar@yahoo.com

REFERENCES

1. Ryu H, Lee HJ. Beau's lines of the fingernails. Am J Med Sci. 2015;349:63.
2. Piraccini BM, Iorizzo M, Starace M, Tosti A. Drug-induced nail diseases. Dermatol Clin 2006;24:387-91.
3. Naik GS, Hari Krishna J. Beau's lines. Indian J Med Res 2013;137:220.



Figure 1: Clinical photograph showing the 2nd, 3rd and the 4th toes of the left foot showing transverse ridges (red arrows)

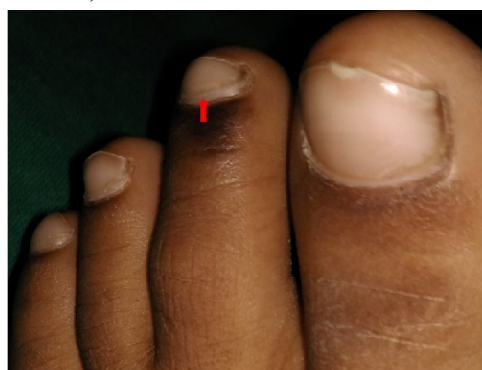


Figure 2: Clinical photograph showing the 2nd toe showing the transverse ridge a little away from the nail bed (red arrow) depicting a Beau's line

**Online access**

http://svimstpt.ap.nic.in/jcsr/oct-dec17_files/sf.17.06.002.pdf
DOI: <http://dx.doi.org/10.15380/2277-5706.JCSR.17.06.002>