

DISASTER MANAGEMENT PLAN

INDEX

S.NO	CONTENTS	PAGE NO.
1	Action Plan	2
2	List of Committee Member	6
3	Nodal Centers & Contact Numbers	8
4	Command Chart	11
5	Duties and Responsibilities of various levels	12
6	Logistics	15
7	Outside Contacts: a. State Emergency Operation Center b. Directorate of Medical Services, Tirupati-517507	16

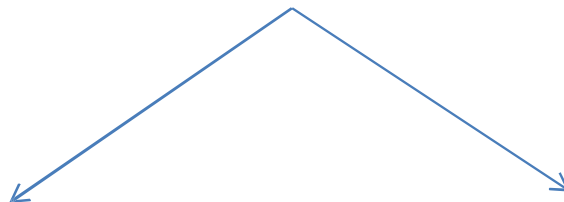
ACTION PLAN

- Call Receiving Line 1(2286388). Call will be received by the Casualty Medical Officer-I 1 on duty within 3 rings and responded by him.
- Alternative contact number for CMO-I
 - Call receiving line for Emergency Room (2286388)
 - For communication to and from Director, MS Office and 7 Heads of the Departments and Officer in charge of Blood bank, MRD, Pharmacy, CSSD, NS, Transportation incharge
 - The plan will be activated by the Director/MS on receiving any information on disaster or masscasualty.

On Patients Arrival



Patients Received from Ambulance by the nursing / Doctor team, direction for vehicle transport given by the Security officer incharge of EM/Casualty

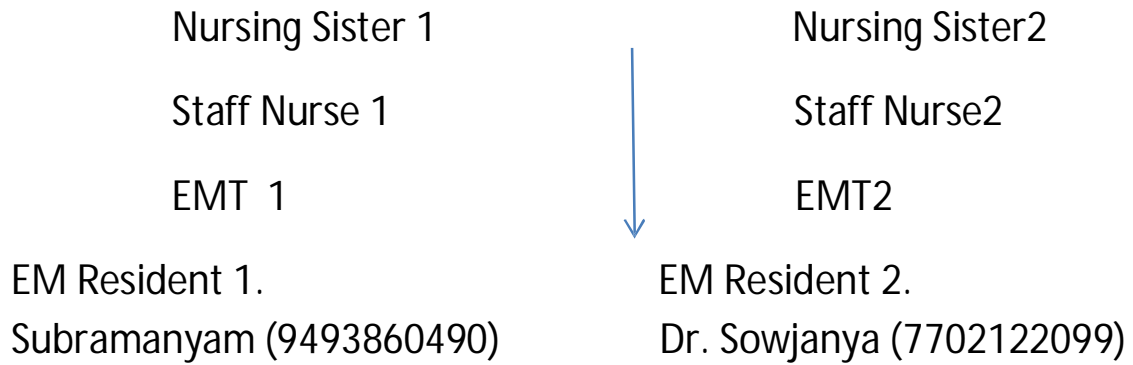


Triage Team 1

Triage team2

(Existing Triage Desk, Just Inside Casualty) (In the Fast Track area, outside lobby of casualty)

CMO2



Allocation colour coding for directing patients to the designated area

Life Threatening Injuries **RED**: Department of EM Trauma: Resuscitation/then to OT or in main Casualty room Left half beds

Non-Life Threatening Injuries **YELLOW**: Casualty Rooms-Right half beds

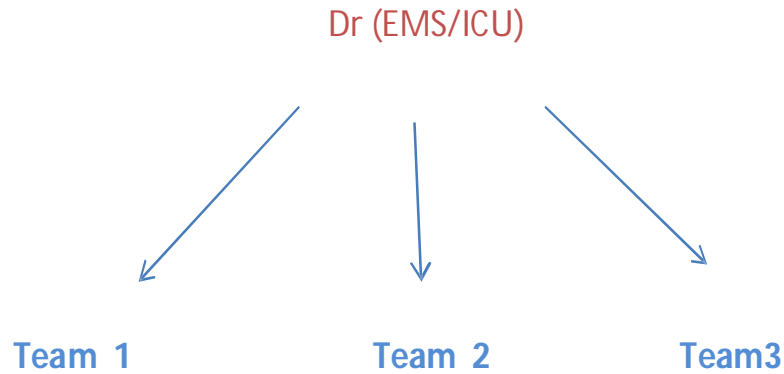
Minor Injuries **GREEN**: Medical ward to left of Casualty

Expired **BLACK** Area near Mortuary



The In charge in these designated areas will function with the team members to co-ordinate patient flow and care

RED: In the Department of Emergency and Trauma Resuscitation (12beds on left half of casualty)



Each team consisting of: Faculty: EM: Dr. Madhusudhan(9493547723), Surg: Dr. Mutheeswaraiah (9440324457), Med: Dr. Alladi Mohan(9493547679), Ortho, Neurosurg: Dr. Sashank(9666582502), CTVS: Dr. Abha Chandra(9493547672), Cardiology: Dr. Rajasekar(9493547667)

EMS SR 1,2

EMS PG 1 Dr. Venkata Sastry(9493547768), 2. Dr. B. Sivaram(9493547802)

3. Dr. Ratna Kumar(9493547764), 4. Dr. Kiran Kumar(9493547814)

Surgery Resident 1. Dr. K. Kishore(8106473517), 2. Dr. Nawaz Mazeed(9393734567)

Cardiology 1. Dr. Ravikanth(9491604547), 2. Dr. Vamsidhar(8332994645),

3. Dr. Vasudeva Chetty(9490930948)

Orthopaedics Resident 1,2

Anaesthesia Resident 1. Dr. Shameem (9493547775), 2. Dr. Moshin(9492503390)

Medicine Resident 1. Dr. P. Sumanth Reddy(9493547804), 2. Dr. Sai Nelima(9493547657)

Neurosurgery: Resident: 1. Dr. K. Venkat (9968856731)

AED: Cardiology: Sailaja, Head Nurse (8500373139)

Neurosurgery Resident, CTVS Resident, Plastic Surgery

- All communications from the resuscitation area will be to the OT's, Blood Bank, Various step down wards will be through
- A meeting should be convened by the HOD of EM & Trauma with the CMO's, Residents, Sister in charge during the preparatory phase

NODAL CENTRES

a. Main nodal centers

SEVEN NODAL POINTS AT SVIMS:

1. Directors Office
2. Medical Superintendent Office
3. Emergency and Trauma Department/Casualty
4. Main Hospital Building-Ward?
5. Academic Center-Deans/Registrar's office
6. Auditorium-Back up Vehicle Positioning
7. SPMC Hospital (Hospital for Pregnant women)

Staff Contact Numbers

1. Directors Office

Designation	Name	Intercom/Landline	Mobile
Director	Dr T. S.Ravikumar	2222/0877-2287152	8500087152
PS to Director	Mrs. G.P.Manjula	2416/0877-2286131	9701099959
PA to Director	Mr. B. Madhu Babu	2212 / 0877-2287152	9000954136
PA to Director	Mrs. Kumari	2212 / 0877-2287152	9618150767
PA to Director	Mr. Sreenivas	2212 / 0877-2287152	9848359520

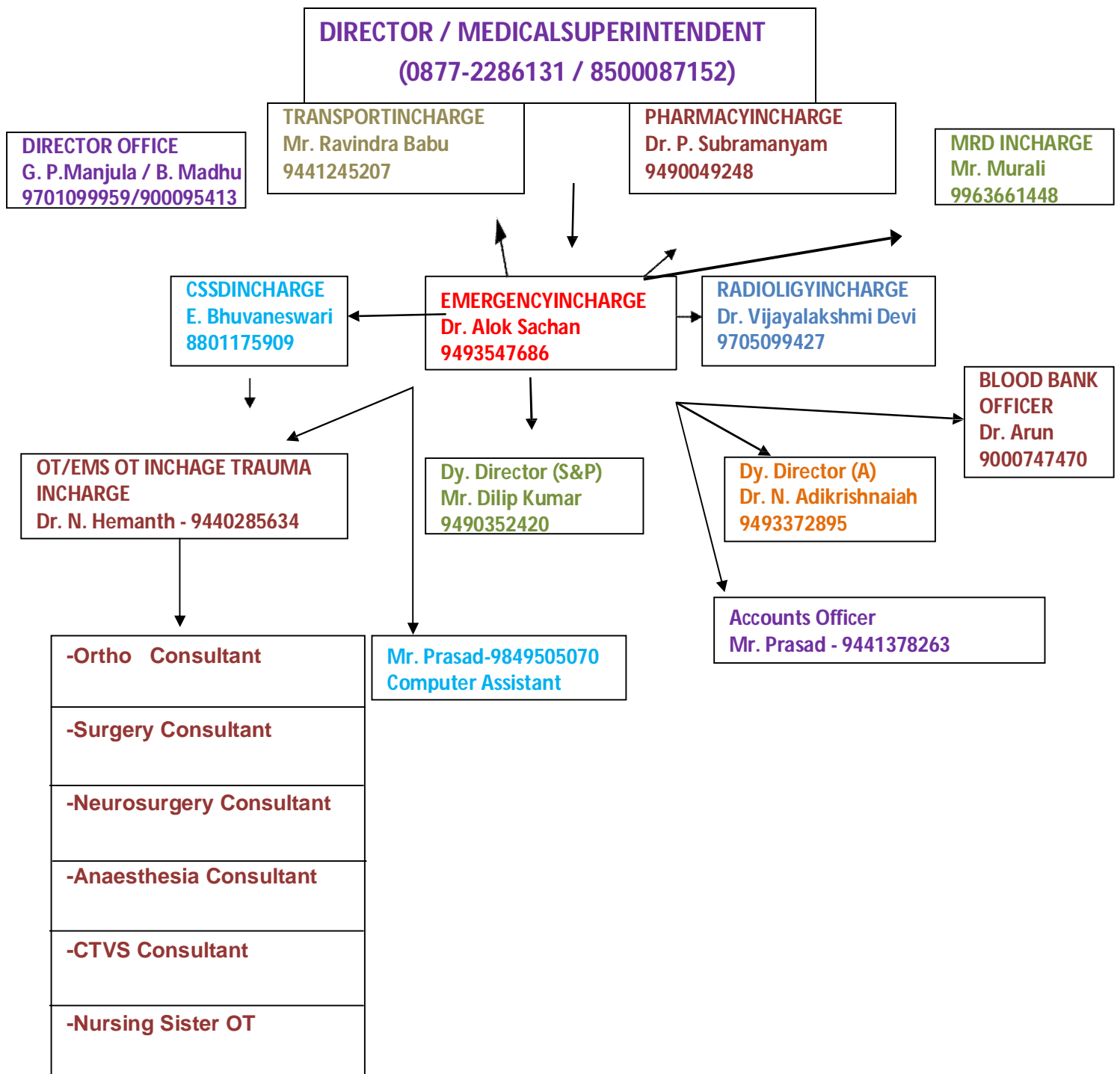
2. Medical Superintendent Office

Designation	Name	Intercom/Landline	Mobile
Medical Superintendent	Dr. Alok Sachan	2265/0877-2286115	9493547686
RMO-1 & RMO-II	Dr. B. Govinda narayana Dr. K. V. Koti Reddy	08772287777	9493373277 9866356239
Mr. M. Sreekanth	PA to Medical Superintendent	2265/ 08772286115	9493816899
Mr. Arun	PA to Medical Superintendent	2265/ 08772286115	9666008869

3. Academic Center-Deans office

Designation	Name	Intercom/Landline	Mobile
Dean	Dr. P. V. L. N. Srinivasa Rao	2458/08772288002	9493547663
Ps to Dean	Mrs. Rajani	2458/08772288002	9440933770
Hostel Warden in chief	Dr. Subhadra Devi	08772287777	9440225860
Hostel Deputy Warden	Dr. Aparna Bhide	08772287777	7382629700
Hostel Assistant Warden	Dr. Hemalatha	08772287777	9493547660

COMMAND CHART



DUTIES AND RESPONSIBILITIES OF VARIOUS LEVELS

1. Director's office

2. Medical Superintendent Office

3. .EMERGENCY MEDICINE AND TRAUMA DEPARTMENT (Casualty)

1. Triage team:

- Rapid assessment and triage, to shift the patients to the designated area

2. Additional Professor:

- To activate the Team in Emergency Department
- Overall supervision and Monitoring
- First Contact Person in Emergency Department for Directors and MS office

3. GDMO1

- Clear the emergency department of all patients (either admit or discharge)
- Inform the chief nurse to organize additional trolleys, drugs and disposables
- Allot CMO & ACMOs to different receiving area
- Contact Person for EM & Trauma Chief

GDMO2:

- Triage In-Charge

4. Assistant Professor

- Management of flow of patients in and out of Resuscitation and ICU
- To coordinate with the Residents for management of patients
- To communicate with the Sister-in-charge, ICU for necessary arrangements
- Reorganize the shift duty for next day

5. HOD's of 7 Departments:

- -To ensure that all the members from the corresponding duty team at Emergency are available
- To supervise and guide the Residents and Doctors for quick treatment and disposition of patients from the Emergency ICU or Resuscitation to the inpatient areas (EMS or Trauma OT and Recovery rooms, Trauma ward (55 beds), 1st floor ward-50beds)

Professor and Head, Anaesthesia:

- To designate in charge consultants for EMS-OT, Trauma ward (Assistant Professor)
- Oversee functioning of OT
- Send JR to Emergency to do PAC for patients requiring surgery
- Redeploying additional residents and consultants depending on number of surgical cases posted.

6. HOD Radiodiagnosis:

- To depute adequate manpower in terms of Residents and Technicians
- To supervise for the Functioning of Emergency Radiology Section (X-rays, CT,USG)

7. HOD Blood Bank, Officer-in-charge of Pharmacy and CSSD:

- To ensure the availability of Essential life saving materials including blood and to co-ordinate their services

8. Deputy Medical Superintendent

- To oversee and guide Medical Officers and Residents in all Medico legal cases
- To co ordinate arrangements for post mortem if required
- -To co ordinate with the D Nagar police if required

9. CMO: Documentation of all medico legal cases

10. Nursing Superintendent

- Overall supervision of functioning, including guidance and help for DNS, ANS, Sister in charge Emergency

11. Sister In charge, Emergency Department:

- Arrange to shift patients towards after getting a list of vacant beds
- Arrange for adequate number of mattresses for emergency beds
- Contact nursing sister to depute necessary additional staff
- Drug, suppliers and equipment to be kept ready
- Allot number of staff nurses for triage I, II area
- Shift patients to OT, ICU, ward as specified by doctors

12. Medical Records Chief:

- Mobilize extra staff to Emergency to register cases
- Designate one staff to keep up to date records of hospital bed position and the vacant number of beds to Emergency number.

13. **Security Supervisor:** To arrange for sufficient manpower for crowd control, vehicle parking in all areas of Hospital

14. **G4S Supervisor:** To supervise cleaning and maintenance of all designated areas, safe disposal of hospital wastes, housekeeping etc by deploying sufficient manpower.

4. MAIN HOSPITAL BUILDING-WARD?

Roles and Responsibilities

- As a back up area if necessity arrives.
- May get additional members from the Dean's Office as required

5. ACADEMIC CENTER-DEANSOFFICE

Roles and Responsibilities

- Dean along with the help of Wardens to look after the arrangements for the additional back up support members if necessity arrives (PG's of various nonclinical departments, Interns and students of Medical and Nursing College)

6. AUDITORIUM-BACK UP VEHICLEPOSITIONING

Roles and Responsibilities

- As an additional area for back up vehicle positioning
- Mr Ramkumar along with Mr Velmurugan to co ordinate the arrangements for back up support and Transport arrangements if required

7. SPMC Hospital (Hospital for Pregnant women)

Roles and Responsibilities

- To identify the area for level 3 cases (Yellow tag: Non life threatening Injuries):
 - For receiving patients and for primary assessment
 - To identify areas for patient admission in Super specialty block
- Head of SSB along with HOD of EM and Trauma to coordinate for the supervision of arrangements, and to supervise the team members from the OPD duty teams.
- Nursing Superintendent and DNS to arrange for the members (Staff Nurse and other supporting staff) and to supervise them.

LOGISTICS

LOGISTICS

1. List of manpower with phone numbers (Unit Doctors on duty)
2. List of medicines
3. Dressing & Suture materials
4. Splints
5. Beds

Beds in Emergency Department

Ground floor - 10 resuscitation beds

- 10

trolleys First floor

-

50beds Fourth

floor- 40beds

ICU Beds - Trauma centre ICU –

6Beds Trauma centre recovery room

– 6 beds Burns ICU

– 6Beds

Triage Area

Priority 1 & 2 patients with Triage team I &II Emergency ground floor

Priority 3 patients with triage team III – SSBOPD

Shelter for patient's attendants:

- In front of
- Near EMS Registration Counter
- Near ambulance garage

OUTSIDE CONTACTS

State Emergency Operation

Center Directorate of Medical

Services, Airport Authority disaster

centre.

Tirupati disaster management centre/collector's office

Supdt. of Police

Fire Station