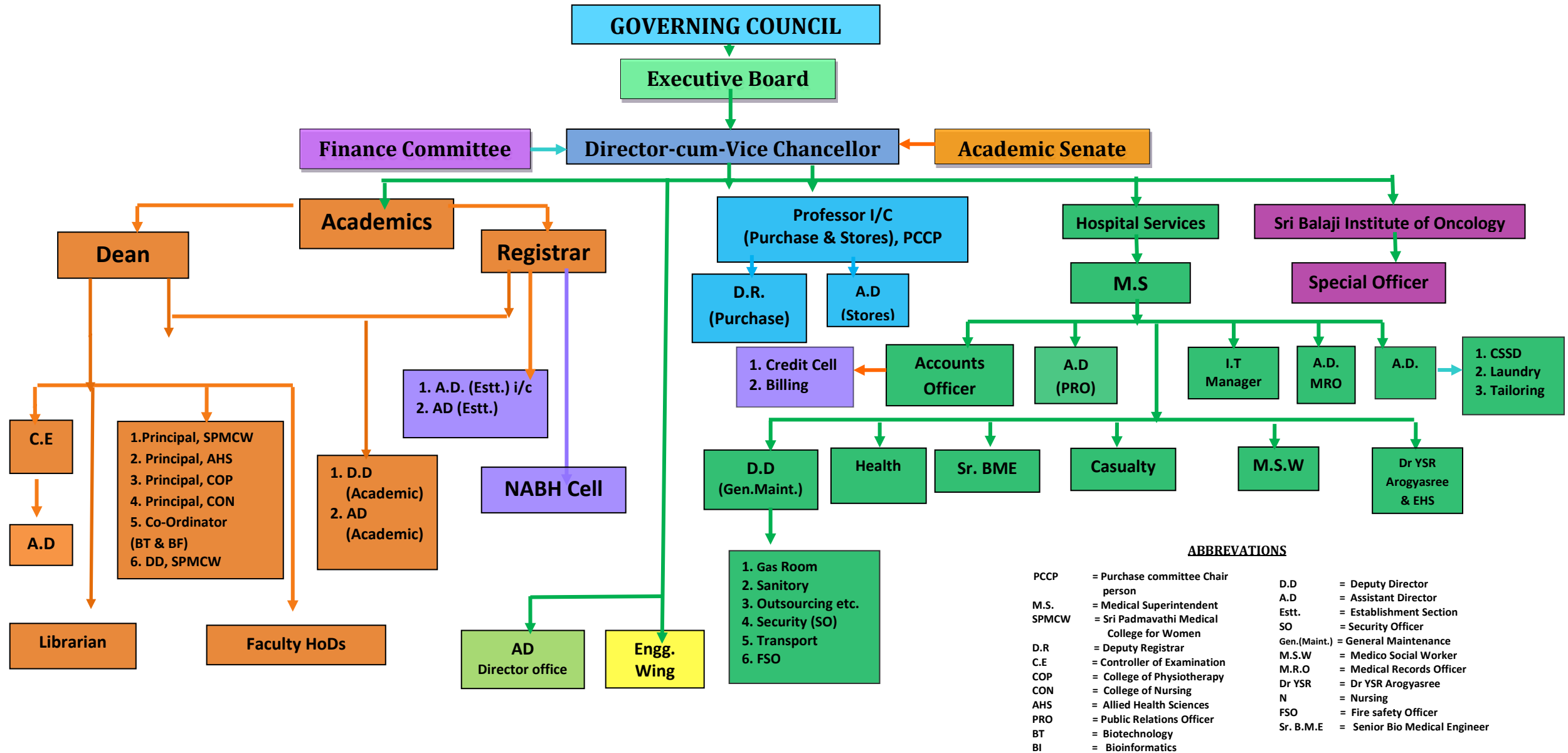


Administration Structure (a). Details of organisation and its structure)
SRI VENAKATESWARA INSTITUTE OF MEDICAL SCIENCES::TIRUPATI
 ORGANOGRAM



ABBREVIATIONS

- | | | | |
|-------|--|--------------|-------------------------------|
| PCCP | = Purchase committee Chair person | D.D | = Deputy Director |
| M.S. | = Medical Superintendent | A.D | = Assistant Director |
| SPMCW | = Sri Padmavathi Medical College for Women | Estt. | = Establishment Section |
| D.R | = Deputy Registrar | SO | = Security Officer |
| C.E | = Controller of Examination | Gen.(Maint.) | = General Maintenance |
| COP | = College of Physiotherapy | M.S.W | = Medico Social Worker |
| CON | = College of Nursing | M.R.O | = Medical Records Officer |
| AHS | = Allied Health Sciences | Dr YSR | = Dr YSR Arogyasree |
| PRO | = Public Relations Officer | N | = Nursing |
| BT | = Biotechnology | FSO | = Fire safety Officer |
| BI | = Bioinformatics | Sr. B.M.E | = Senior Bio Medical Engineer |